



OUR MISSION

To supply turn of the 20th century classic homes that are superbly designed and up to 1800 square feet.

Our innovative and efficient shell packages are RIGHT sized, secure, and smart.

CONTACT

General Information

(313) 757-1876

SElliott@righthomecompany.com

RIGHTHOMECOMPANY.COM



RIGHT-SIZED & SMART

WHY BUILD WITH US

The Right Home Company supplies superbly designed smaller home shell packages. Our classic homes are right-sized, up to 1800 square feet, highly energy efficient and smart for today's lifestyles.

With common sense and good design, Right Home Co. has the very best of both worlds. By using the latest construction materials, Structural Insulated Panels (SIPs), our homes save a great deal of energy and construction time. And saving energy and time means saving a lot of money.

RIGHTHOMECOMPANY.COM

THE AUBURN

Three bedrooms & 2 1/2 baths

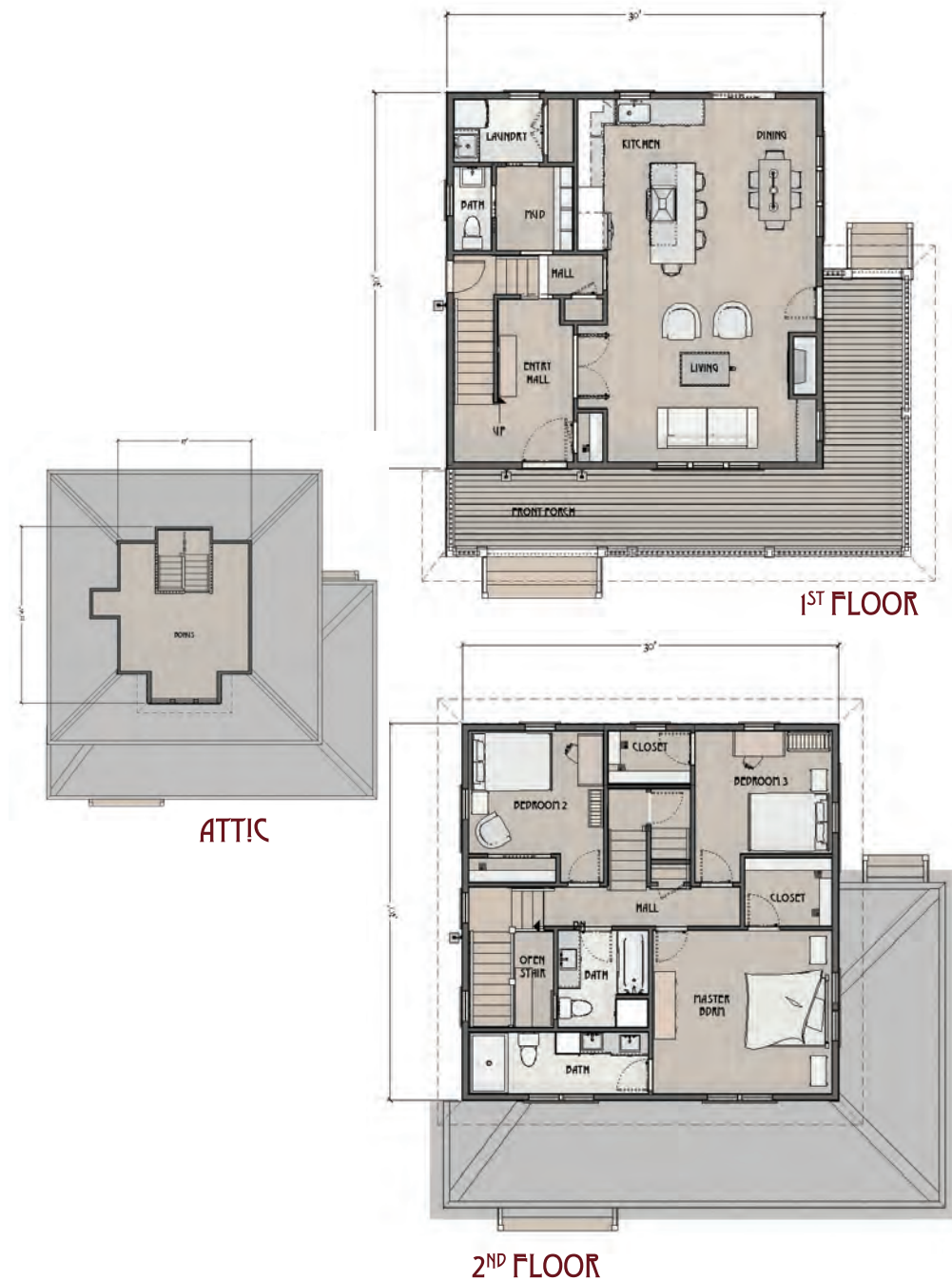
Based on the classic American foursquare, this craftsman styled home features a hipped roof and large wrapping porch. Inside you'll find a dramatic entry stair, with a doorway that opens to a combined living-dining-kitchen area flowing through the house to the back yard beyond. Perfect for a young and growing family of 4 or more. With access to a bonus attic space, and a dry finishable basement, this house has room to grow along.

1800 sq ft

CLASSIC AMERICAN



FLOOR PLANS



THE AVALON

Three bedrooms & 2 1/2 baths

Sears and Roebuck Co. used this classic design genre of the era. This house is an elegant example maintaining the charms of a traditional bungalow with its attention to detail and proportion. All while providing the living spaces for our modern lives. Implementing 'not so big' house principles, this plan accommodates a family of four comfortably and fits on either a tight city lot or stretched out on a bigger parcel.

1861 sq ft

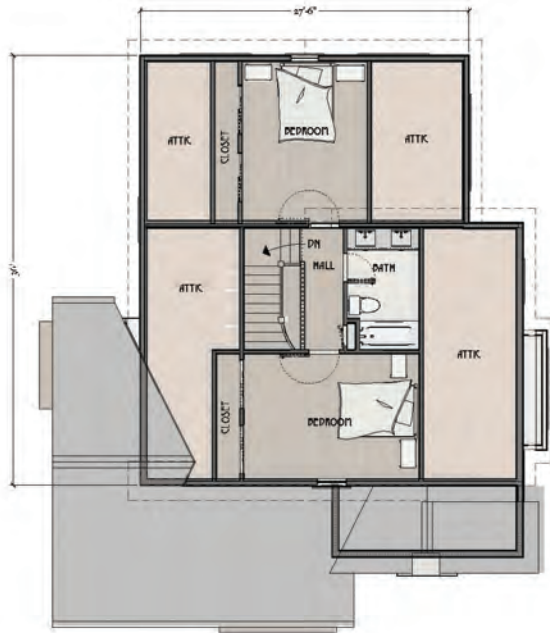
CLASSIC CHARM



FLOOR PLANS



1ST FLOOR



2ND FLOOR

THE BURNHAM

Three bedrooms & 2 1/2 baths

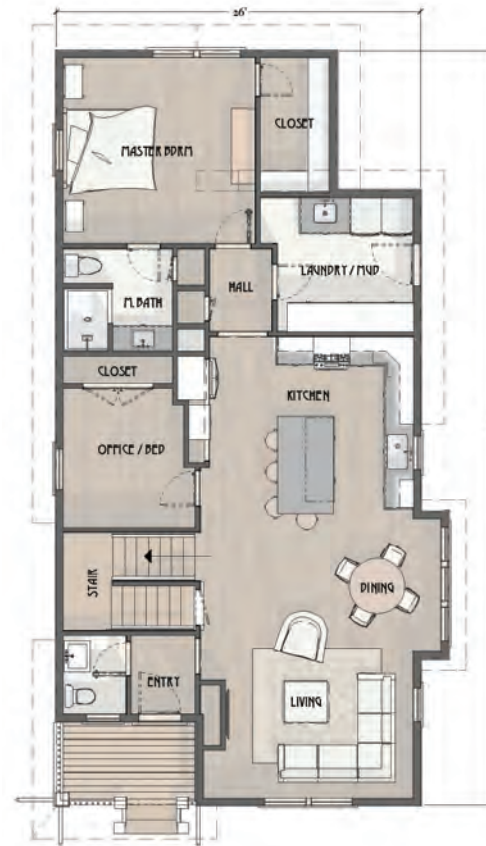
Here is an early 20th-century, two-story arts and crafts design with a corner porch and a familiar midwest small town appearance. A family of two to four can enjoy this home to the fullest with a main floor master suite, open concept living-dining-kitchen spaces, and two bedrooms on the second floor for children or guests. This home provides for today's convenience with an office and a laundry/mud room, optimizing both its floor space and livability.

1897 sq ft

MIDWEST
ARTS & CRAFTS

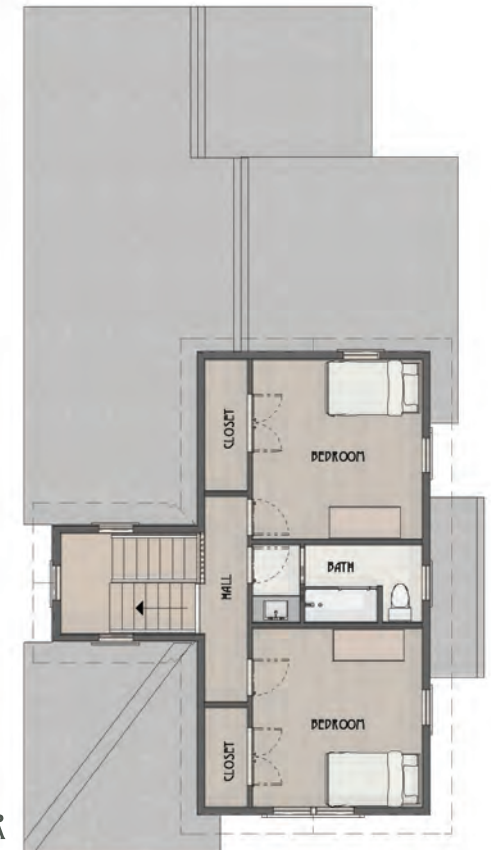


FLOOR PLANS



1ST FLOOR

2ND FLOOR



THE CHAUTAUQUA

Three bedrooms & 2 1/2 baths

Our Chautauqua-style home follows the original evolution of a highly popular late 19th-century educational movement that brought culture and education movement that brought culture and education to entire communities. The communities were developed with very small lots and very accessible 'common' areas including auditoriums. Our updated version of this American classic is an open and practical plan with lots of storage, big mud room, 3 or 4 bedrooms, 2-1/2 bath design that is less than 1,900 sf.

1881 sq ft

AMERICAN ARTS CULTURE



FLOOR PLANS



THE EDISON

Three bedrooms & 2 1/2 baths

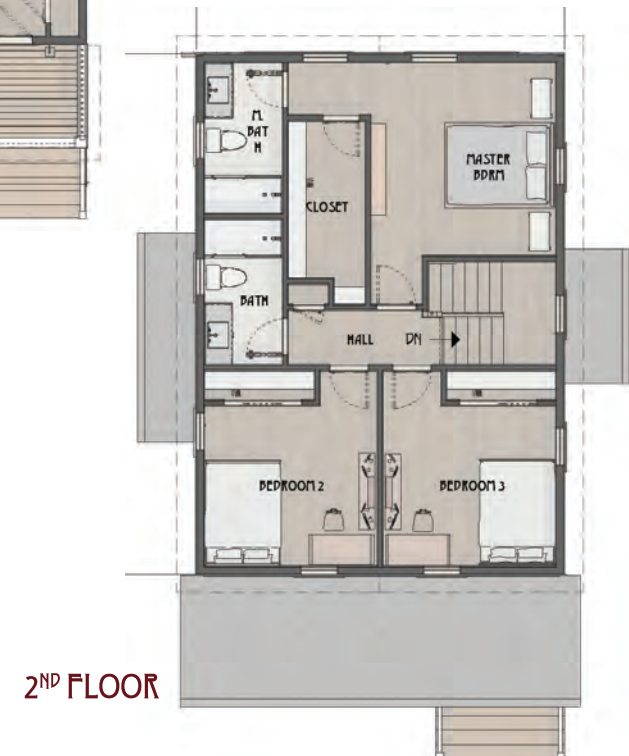
Based on the simple Gable design that forms the basis of towns and traditional neighborhoods throughout the country, the Edison draws from the simple, elegant lines that give this style it's lasting charm - and incorporates modern living spaces within. Designed for a family of up to 3 children with a front porch welcomes guests, and provides a place to watch the neighborhood walk by.

1654 sq ft

LASTING CHARM



FLOOR PLANS



THE HAMILTON

Three bedrooms & 2 1/2 baths

Based on the classic story and a half craftsman design. This house maintains the charms of a traditional bungalow while providing the updated living spaces our modern lives demand. Based on the 'not so big' house principles, this plan accommodates a family with 2-3 children comfortably. A well-designed kitchen, comfortable living spaces, and a front entry area that's bound to get plenty of use make the house a charming addition to any street.

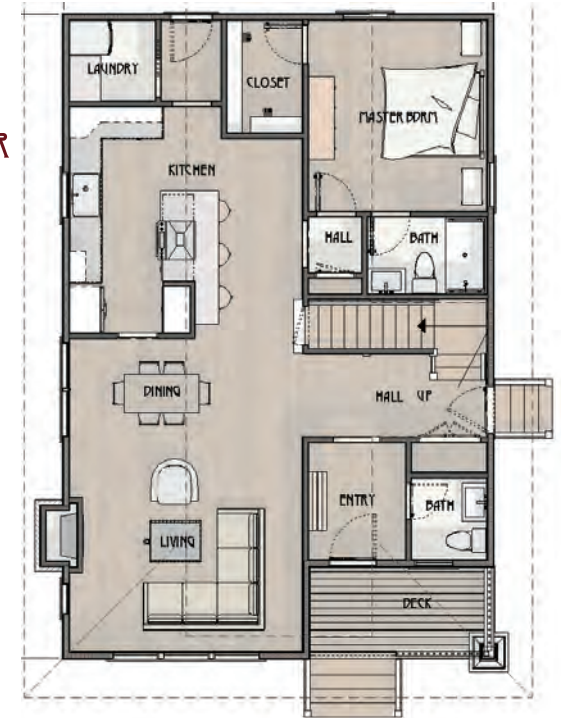
1583 sq ft

MODERN BUNGALOW

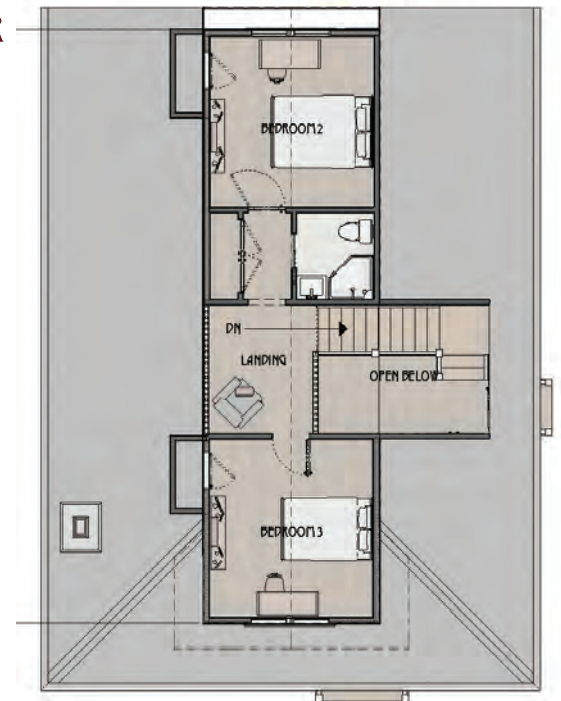


FLOOR PLANS

1ST FLOOR



2ND FLOOR



THE JACKSON

Three bedrooms & 2 1/2 baths

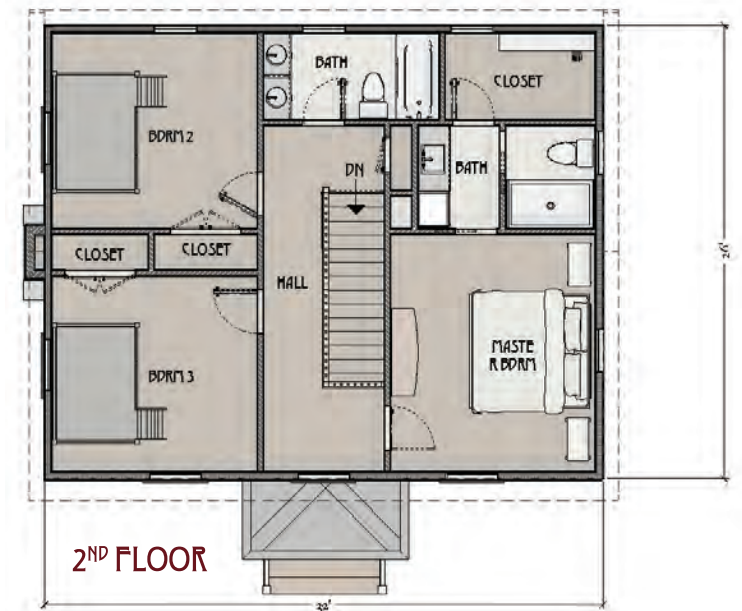
Based on the classic colonial 3-bay. This house keeps the clean, simple exterior of the traditional form - but rethinks the layout to accommodate today's modern life. Instead of the stuffy, dark rooms of the past, the interior is carefully choreographed to create distinct areas within a larger open plan. Designed to accommodate a family with 2-3 children

1671 sq ft

CLEAN & SIMPLE



FLOOR PLANS



THE MILFORD

Three bedrooms & 2 1/2 baths

A cute, compact cottage perfectly situated to urban infill or traditional neighborhoods. This home couples an open plan and efficient organization with a generous covered front porch. A first-floor master, situated at the back, makes it a good contender for aging in place design, while the two upstairs bedrooms make it flexible enough for a growing family. A first-floor office/study is a nice feature, that could also double as a nursery for those with new babies. Finally, a convenient side entrance that leads directly to a mudroom/laundry area ensures that all messes are contained in their proper place.

1527 sq ft

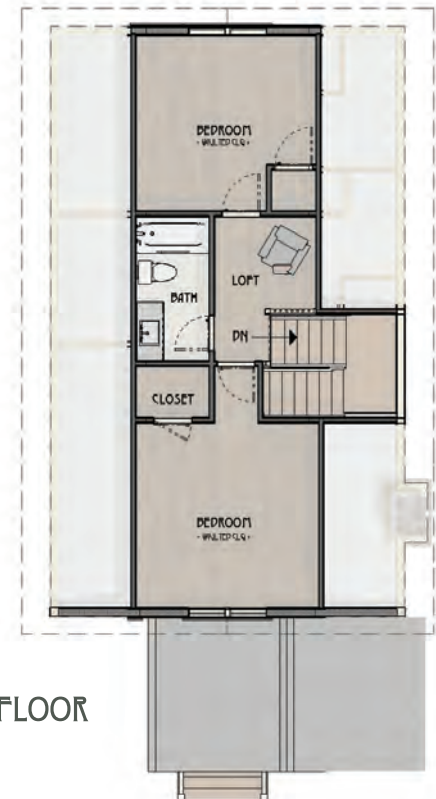
PERFECTLY EFFICIENT



FLOOR PLANS



1ST FLOOR



2ND FLOOR

THE OXFORD

Three bedrooms & 2 1/2 baths

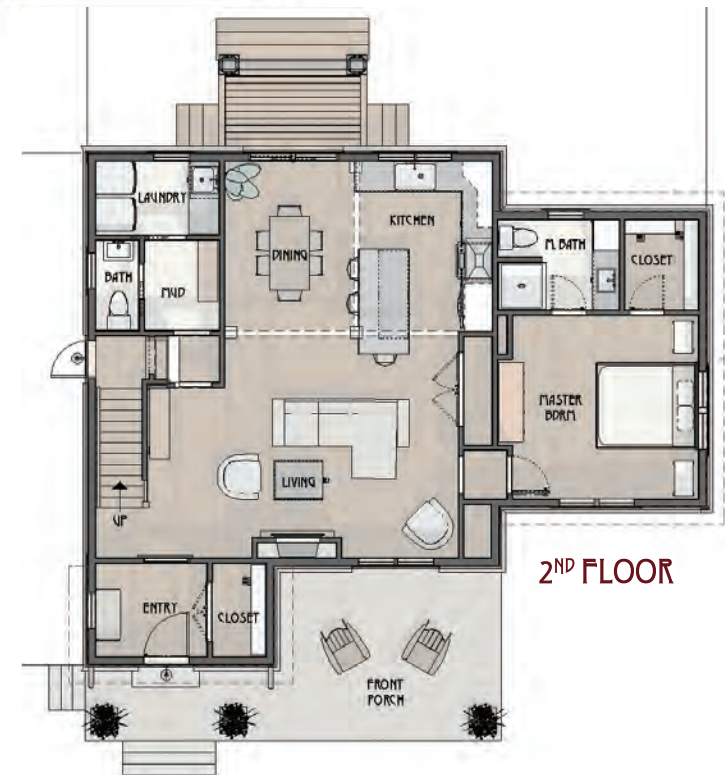
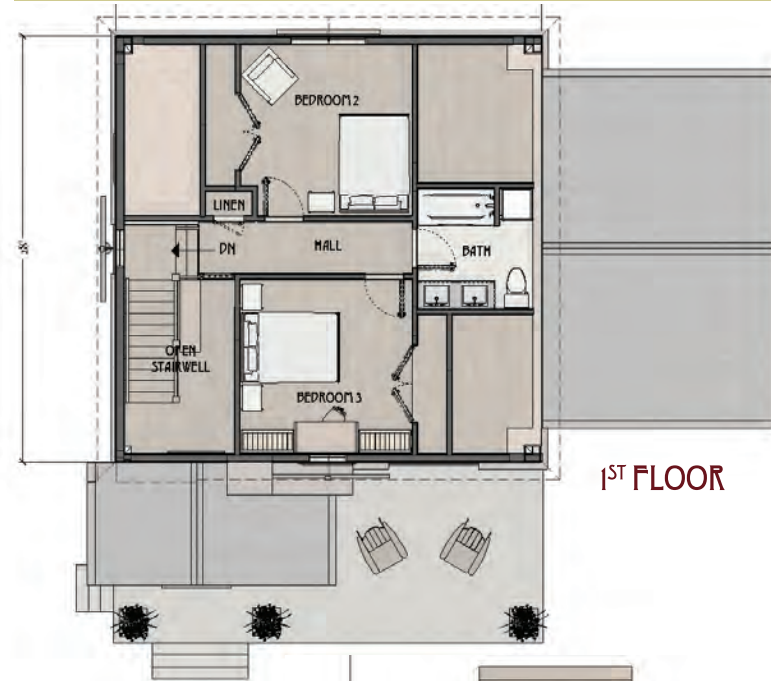
A cross gabled tudor cottage featuring a large central living space with access to the backyard, a well-sized kitchen and dining area - the house gives nod to the easy coziness of the cottage style, but layers in openness expected from modern layouts. With a first floor master, and two upstairs bedrooms, a family of four or or five could comfortably enjoy this house for years to come.

1743 sq ft

MODERN COZINESS



FLOOR PLANS



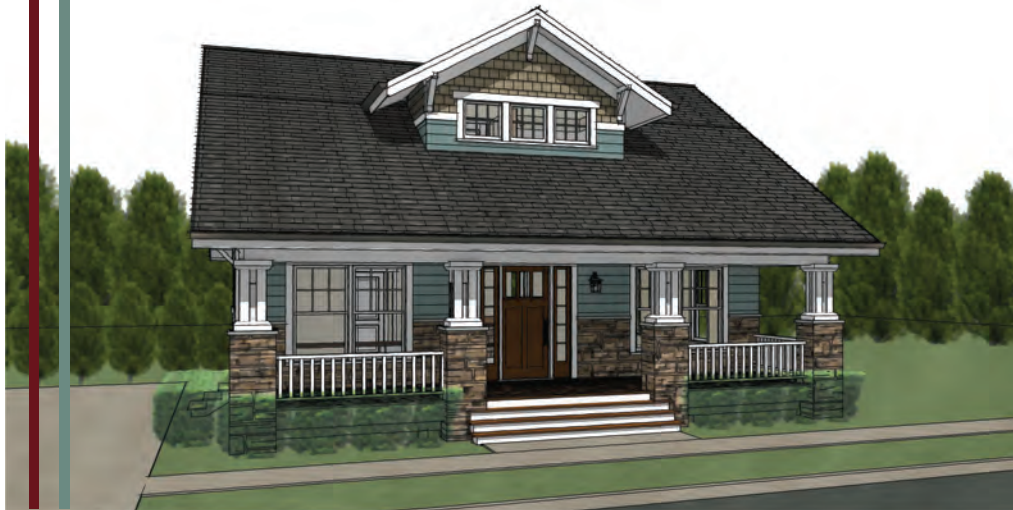
THE SHERIDAN

Three bedrooms & 2 1/2 baths

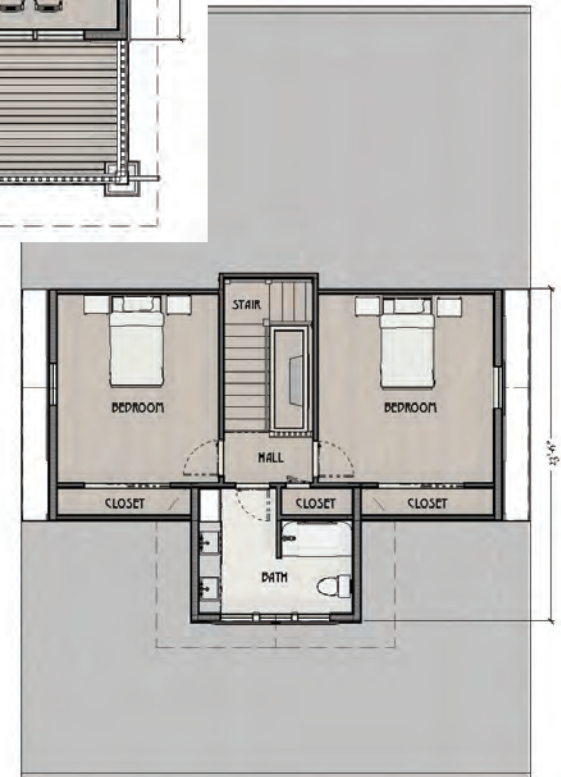
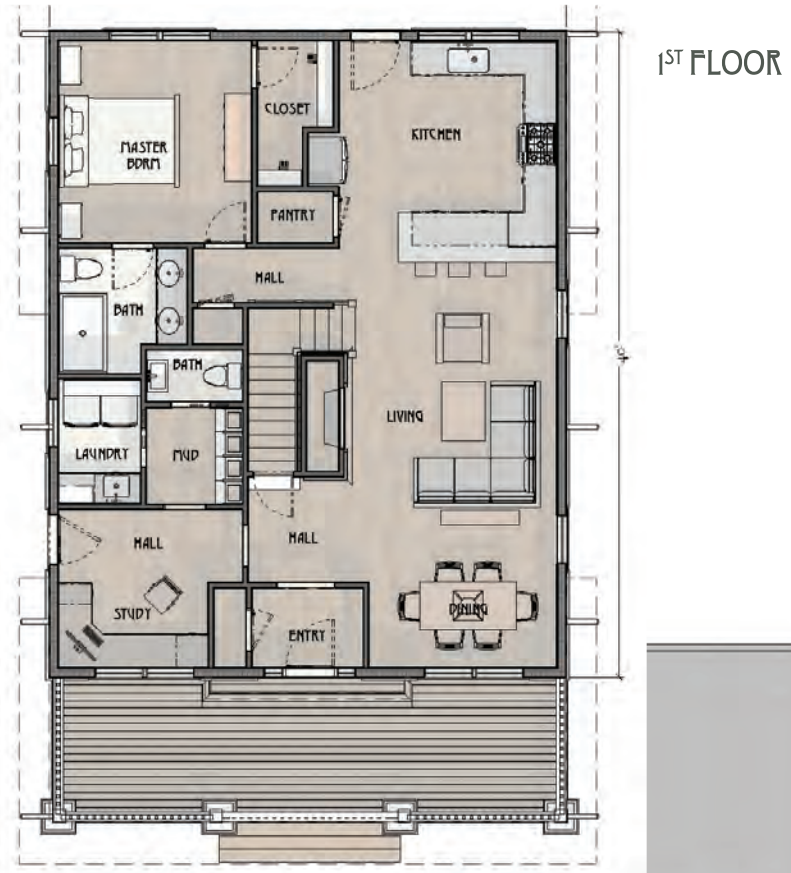
The Sheridan is a classic 'Sears Craftsman' home that maintains the charms of a traditional bungalow while incorporating many of the 'not so big' house principles. This plan accommodates a family with 2 to 4 children while providing the updated living spaces our modern lives demand. This classic comfortably fits onto either a tight city lot or stretching out on a bigger parcel.

1893 sq ft

CLASSIC COMFORT



FLOOR PLANS



THE STONINGTON

Three bedrooms & 2 1/2 baths

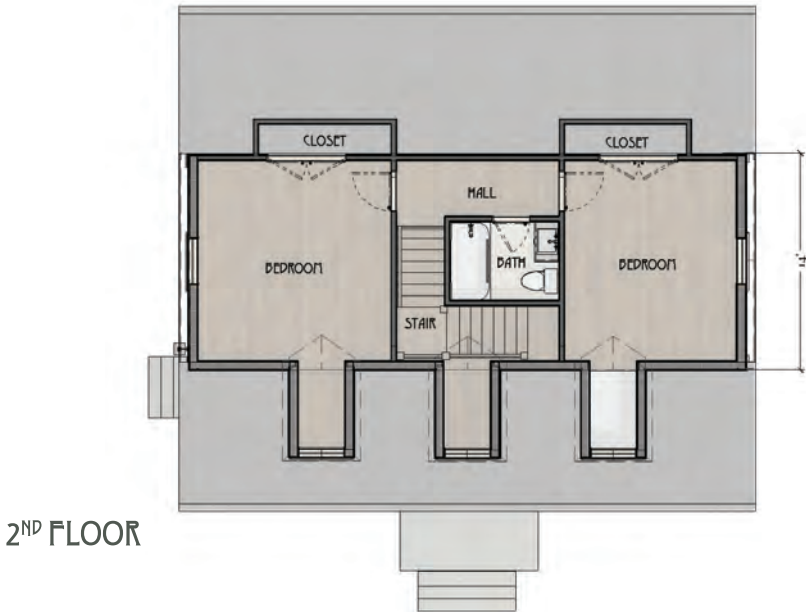
This quintessential cape cod house of the early colonial period has a redesigned interior to reflect today's open concept lifestyle with an open living-dining-kitchen space, laundry, mud room and master suite on the main floor. This home functions essentially as a one story quarters with children's or guest rooms upstairs.

1644 sq ft

QUINTESSENTIAL
CAPE COD



FLOOR PLANS



THE STONINGTON

WITH A PORCH

Three bedrooms & 2 1/2 baths

This quintessential cape cod house of the early colonial period complete with a front porch. The Stonington has a redesigned interior to reflect today's open concept lifestyle with an open living-dining-kitchen space, laundry, mud room and master suite on the main floor. This home functions essentially as a one story quarters with children's or guest rooms upstairs.

1644 sq ft

QUINTESSENTIAL
CAPE COD



FLOOR PLANS



THE TECUMSEH

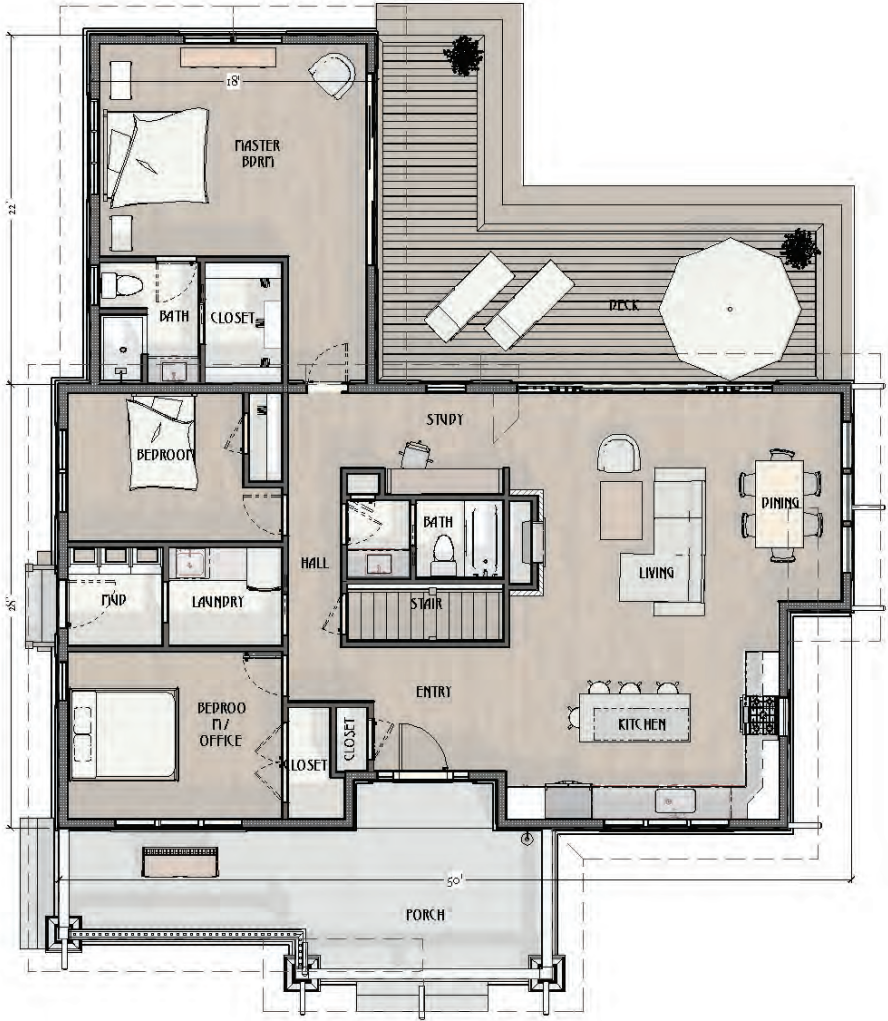
FLOOR PLANS

Three bedrooms & 2 baths

The Tecumseh is the most pleasing proportioned Craftsman Ranch architecture - you will not find an equal. The prominent front porch gables with its classic wide Craftsman overhang emphasize the homes graceful lines. You'll love the access to light and nature with the L-shaped plan provides, situating the living room and master bedroom off a protected outdoor living spaces. A dining nook, central fireplace, study/desk area radiate off from the living room, and two bedrooms anchor the opposite end of the house. All seamlessly nestled into a light and airy 1700 square feet.

1741 sq ft

CRAFTSMAN RANCH



THE TECUMSEH

WITH TWO BEDROOMS

Two bedrooms & 1 bath

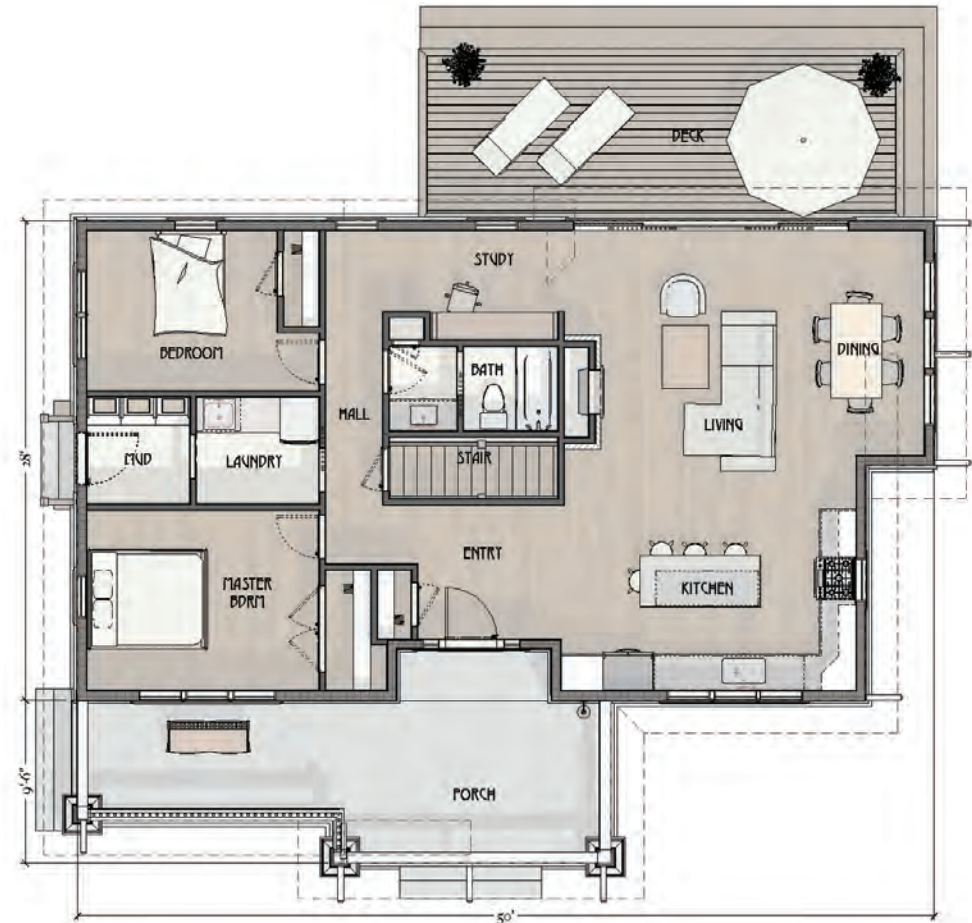
For those looking for a lighter initial investment, build the smaller version of the Tecumseh. The master bedroom suite is a perfect option and easily added later because of the SIP high performance shell. This two bedroom, one bath, open floor plan has enlightened Craftsman proportions all seamlessly nestled into a light and airy 1317 square feet.

1317 sq ft

CRAFTSMAN RANCH



FLOOR PLANS



AT THE RIGHT HOME COMPANY LESS IS MORE

Less waste
Less time
Less cost
Less energy
Less maintenance

More comfort
More natural light
More time to enjoy
More sustainable
More money in your pocket



All house designs by
© KJM Studio 2018,
Please don't copy or
steal these designs



CREATING YOUR RIGHT DESIGNED HOME

Home Design: When you sign up for our shell package, one round of minor design changes within the envelope that are limited to interior space, without moving stairs, or structural supporting walls. Altering the foundation design and adding a detached 24' x 24' - 2 car garage are also included.

Site: We will happily review your building site using your survey and topographical documents. Tell us about the weather, views, main access road, local codes, zoning (setbacks) and utilities. We will review the information, make suggestions &, if needed or desired, propose a cost to produce your site plan.

'Lockable Shell Package' means when your package is installed on your foundation, it is 'lockable' and secure. It includes: an envelope of Structural Insulating Panel (SIP) walls and roof with appropriate building wrap and breathable underlayment • High performance vinyl windows and insulated entry doors • Engineered floor systems, prefabricated interior partitions and main level stairs • A Builder's set of construction drawings with options as agreed • Delivery of materials to your job site.

The Process: Choose CLASSIC design from our inspired catalogue • Confirm design meets intended location, local codes, budgets and schedule • Make desired design changes • Complete financing • Choose builder • Schedule construction

A General Schedule: We need 8 to 10 weeks from placing the order to deliver your lockable shell • You should allow a minimum of 4 weeks from breaking ground to completion of your foundation in preparation for your lockable shell • Avg. construction time on site for a turn key project is 7-9 mos.

Construction Budget: We use a very sophisticated construction cost estimating tool. Combined with our network and experience, these estimates are a very reliable. Personal choice and your site will make a cost difference. Please refer to our summarized guideline assumptions.¹

¹ Includes: Home built in a northern 6500 DDH climate, excavation, full basement, backfilled & balanced site. Exterior: our shell, siding & trim or fiber-cement materials, 45 yr. asphalt shingles, high performance windows and doors. Interior: stone counter tops, solid wood cabinetry and mill-work, wood floors, ceramic tile walls and floors in wet areas, painted gypsum walls, ceilings and trim, solid core interior doors, high efficiency mechanical systems with allowances for fixtures. Budgeted separately are land site access, utilities, landscaping, patios, and out buildings.

OUR COMMITMENT TO SUSTAINABLE BUILDING

As a premier supplier & designer of sustainable classical homes, THE RIGHT HOME COMPANY combines practical home sizes & styles with modern technologies that save both materials and energy.

By making use of ready to assemble components such as wall & roof Structural Insulating Panels (SIPs), we offer huge savings in on site time, building materials, construction labor and crew travel while reducing the probability of material damage, theft, and replacement costs. With less material waste, our packages save landfill disposal costs. By using properly installed SIPs and high-performance windows, the completed home will reduce energy costs by as much as 50%.

THE RIGHT HOME COMPANY PROCESS

With our dynamic team of experts with experience dating back to the early 70s, THE RIGHT HOME COMPANY focuses on high quality, functional, elegant, and energy efficient homes.

First, select from our catalogue of early 20th century designs. Next, we will evaluate your site, talk about minor interior space revisions and review the construction process. Knowing how important budgets and planning are, we will also help generate a useful budget and construction schedule.

Contact Stewart Elliott, Lon Cooke or Mike Bowman to start the process of creating your dream HOME that has the RIGHT design, RIGHT size, is truly functional and highly efficient.

PLEASE ASK ABOUT OUR DESIGN SUPPORT

Connected garages (some via breezeways) may be available.

Ask about our help in creating a turnkey budget.

Minor changes to interior space may be possible.

Discuss foundations options, slab crawl spaces, full and walkout basements and Insulated Concrete Forms (ICFs)

We offer site plan advice based on your surveys and topographical information.