

OUR COMMITMENT TO SUSTAINABLE BUILDING

As a premier supplier & designer of sustainable classical homes, **THE RIGHT HOME COMPANY** combines practical home sizes & styles with modern technologies that save both materials and energy.

By making use of ready to assemble components such as wall & roof Structural Insulating Panels (SIPs), we offer huge savings in on site time, building materials, construction labor and crew travel while reducing the probability of material damage, theft, and replacement costs. With less material waste, our packages save landfill disposal costs. By using properly installed SIPs and high-performance windows, the completed home will reduce energy costs by as much as 50%.

THE RIGHT HOME COMPANY PROCESS

With our dynamic team of experts with experience dating back to the early 70s, **THE RIGHT HOME COMPANY** focuses on high quality, functional, elegant, and energy efficient homes.

First, select from our catalogue of early 20th century designs. Next, we will evaluate your site, talk about minor interior space revisions and review the construction process. Knowing how important budgets and planning are, we will also help generate a useful budget and construction schedule.

Contact us to start the process of creating your dream **HOME** that has the **RIGHT** design, **RIGHT** size, is truly functional and highly efficient.

PLEASE ASK ABOUT OUR DESIGN SUPPORT

Connected garages (some via breezeways) may be available.

Ask about our help in creating a turnkey budget.

Minor changes to interior space may be possible.

Discuss foundations options, slab crawl spaces, full and walkout basements and Insulated Concrete Forms (ICFs)

We offer site plan advice based on your surveys and topographical information.



RIGHT-SIZED & SMART

OUR MISSION

To supply turn of the 20th century classic homes that are superbly designed and up to 1800 square feet. Our innovative and efficient shell packages are **RIGHT** sized, secure, and smart.

CONTACT

General Information

info@righthomecompany.com

RIGHTHOMECOMPANY.COM

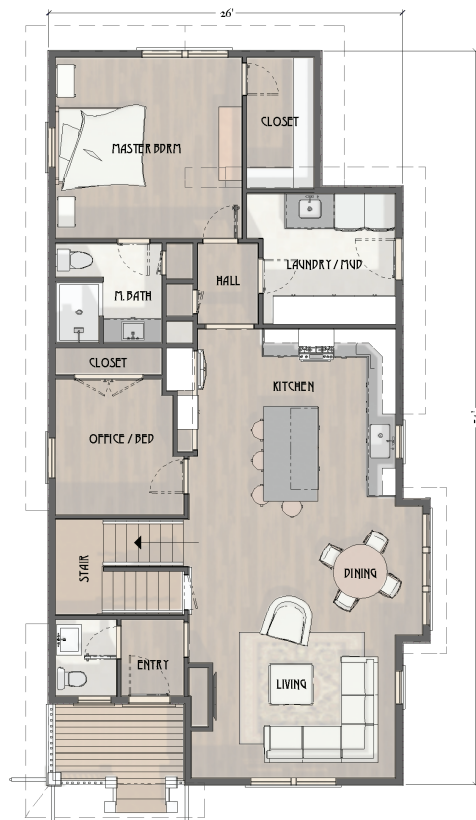
THE BURNHAM

MIDWEST
ARTS & CRAFTS

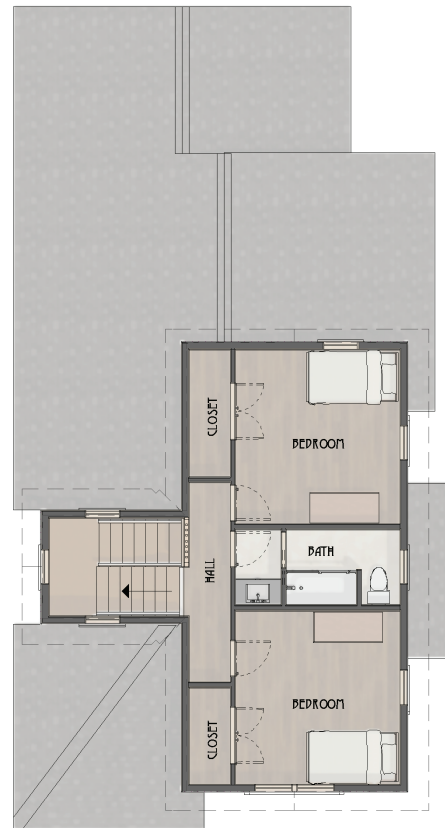
Three bedrooms & 2 1/2 baths

Here is an early 20th-century, two-story arts and crafts design with a corner porch and a familiar midwest small town appearance. A family of two to four can enjoy this home to the fullest with a main floor master suite, open concept living-dining-kitchen spaces, and two bedrooms on the second floor for children or guests. This home provides for today's convenience with an office and a laundry/mud room, optimizing both its floor space and livability.

1897 sq ft



1ST FLOOR



2ND FLOOR

AT THE RIGHT HOME CO. LESS IS MORE

Less waste
Less time
Less cost
Less energy to heat & cool
Less embodied energy
Less cost to operate
Less cost to own
Less maintenance

More comfort
More natural light
More time to enjoy
More sustainable
More money in your pocket



© KJM Studio 2018,
Please don't copy or steal
these designs