

## OUR COMMITMENT TO SUSTAINABLE BUILDING

As a premier supplier & designer of sustainable classical homes, **THE RIGHT HOME COMPANY** combines practical home sizes & styles with modern technologies that save both materials and energy.

By making use of ready to assemble components such as wall & roof Structural Insulating Panels (SIPs), we offer huge savings in on site time, building materials, construction labor and crew travel while reducing the probability of material damage, theft, and replacement costs. With less material waste, our packages save landfill disposal costs. By using properly installed SIPs and high-performance windows, the completed home will reduce energy costs by as much as 50%.

## THE RIGHT HOME COMPANY PROCESS

With our dynamic team of experts with experience dating back to the early 70s, **THE RIGHT HOME COMPANY** focuses on high quality, functional, elegant, and energy efficient homes.

First, select from our catalogue of early 20th century designs. Next, we will evaluate your site, talk about minor interior space revisions and review the construction process. Knowing how important budgets and planning are, we will also help generate a useful budget and construction schedule.

Contact Stewart Elliott, Lon Cooke or Mike Bowman to start the process of creating your dream **HOME** that has the **RIGHT** design, **RIGHT** size, is truly functional and highly efficient.

## PLEASE ASK ABOUT OUR DESIGN SUPPORT

Connected garages (some via breezeways) may be available.

Ask about our help in creating a turnkey budget.

Minor changes to interior space may be possible.

Discuss foundations options, slab crawl spaces, full and walkout basements and Insulated Concrete Forms (ICFs)

We offer site plan advice based on your surveys and topographical information.



RIGHT-SIZED & SMART

## OUR MISSION

To supply turn of the 20<sup>th</sup> century classic homes that are superbly designed and up to 1800 square feet. Our innovative and efficient shell packages are **RIGHT** sized, secure, and smart.

## CONTACT

General Information

[info@righthomecompany.com](mailto:info@righthomecompany.com)

[RIGHTHOMECOMPANY.COM](http://RIGHTHOMECOMPANY.COM)

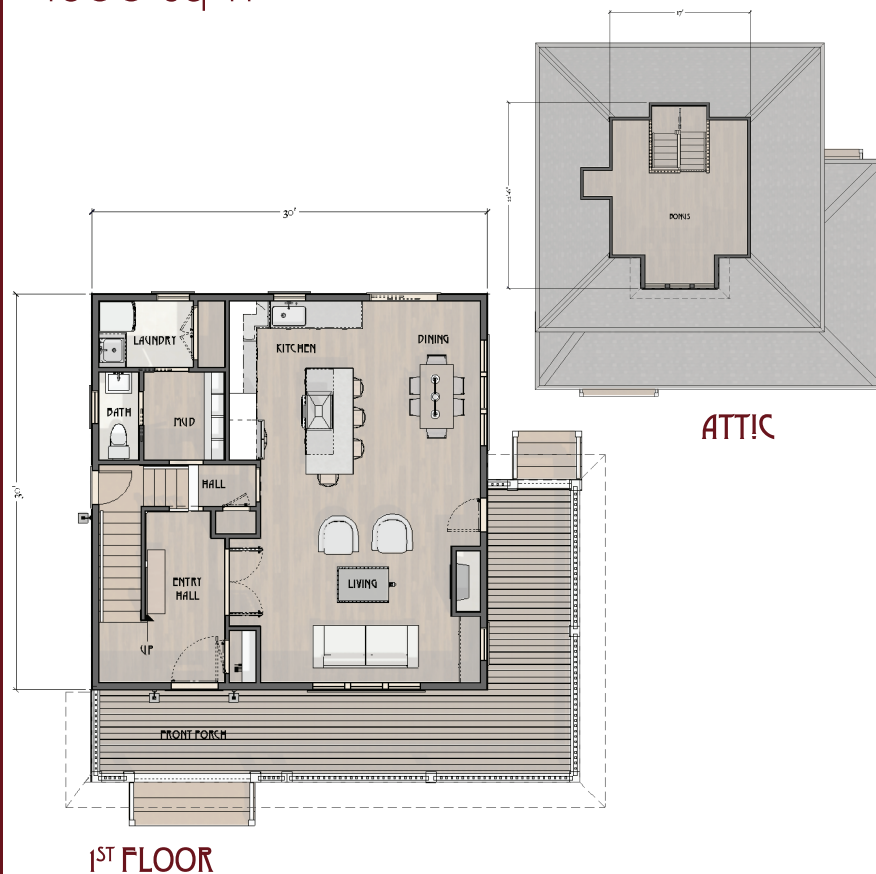
# THE AUBURN

CLASSIC AMERICAN

## Three bedrooms & 2 1/2 baths

Based on the classic American foursquare, this craftsman styled home features a hipped roof and large wrapping porch. Inside you'll find a dramatic entry stair, with a doorway that opens to a combined living-dining-kitchen area flowing through the house to the back yard beyond. Perfect for a young and growing family of 4 or more. With access to a bonus attic space, and a dry finishable basement, this house has room to grow along.

1800 sq ft



## AT THE RIGHT HOME CO. LESS IS MORE

Less waste  
Less time  
Less cost  
Less energy to heat & cool  
Less embodied energy  
Less cost to operate  
Less cost to own  
Less maintenance

More comfort  
More natural light  
More time to enjoy  
More sustainable  
More money in your pocket



© KJM Studio 2018,  
Please don't copy or steal  
these designs